

Preliminary Report of Microtremor Measurement on Versailles

Date of measurement : October 27th, 1999

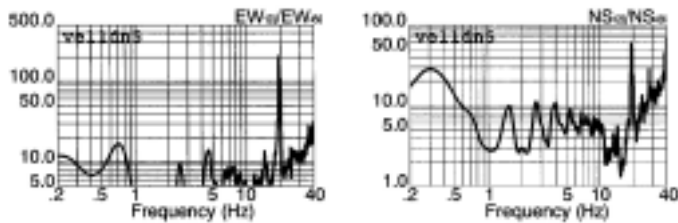
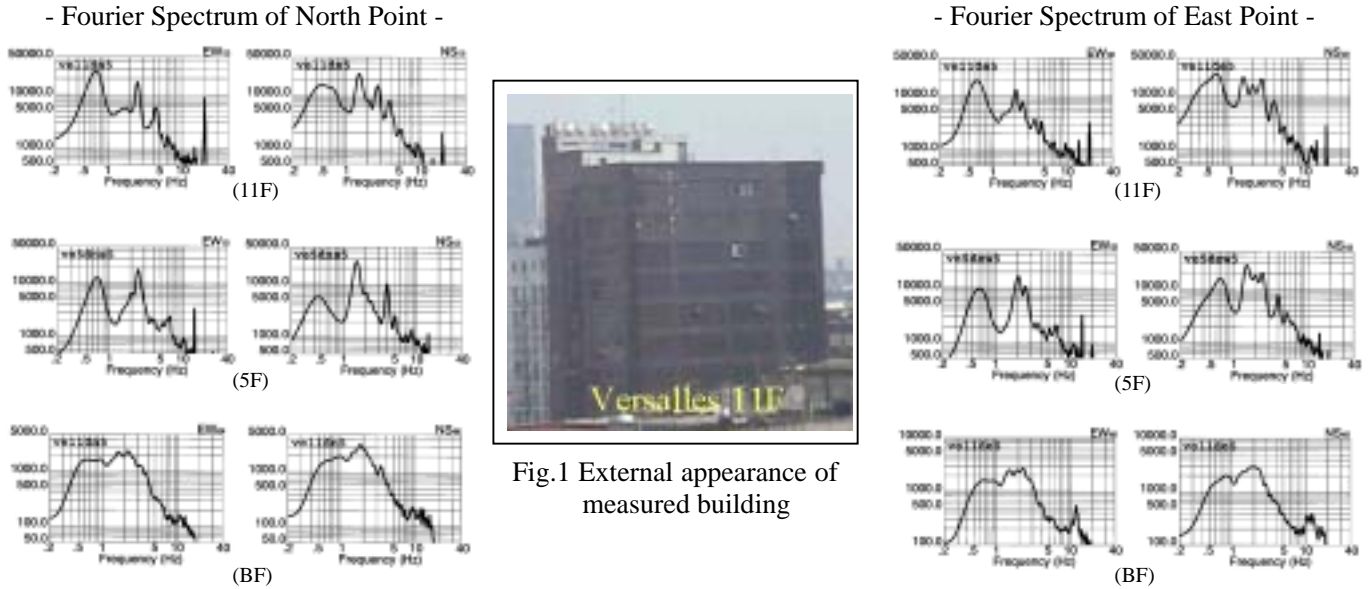


Fig.2 Estimated quasi-transfer spectrum of north point on the roof

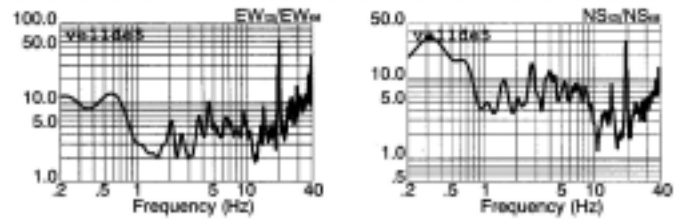


Fig.3 Estimated quasi-transfer spectrum of east point on the roof

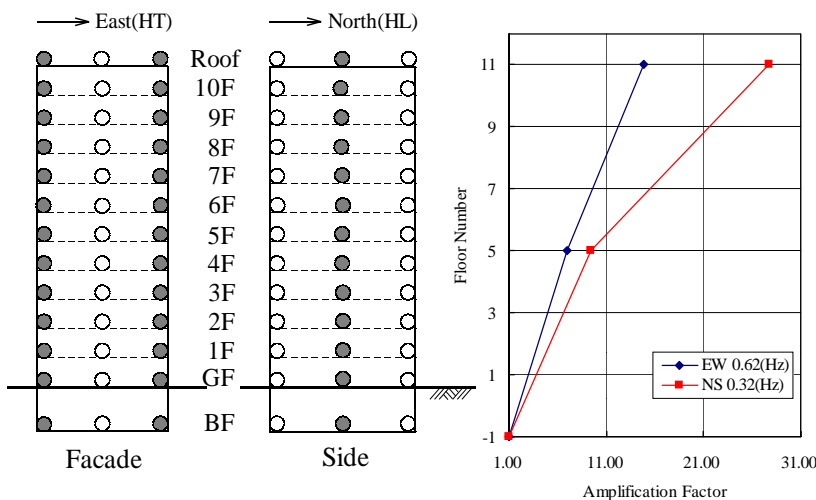


Fig.4 Measured points on each floor and vibration mode

Predominant Frequencies
 Statistic value
 $F = (10 \sim 16)/N$
 $= 0.91 \sim 1.45(\text{Hz})$
 Measured value
 EW component $F=0.62(\text{Hz})$
 NS component $F=0.32(\text{Hz})$
 F: Frequency (Hz)
 N: Number of stories (Floor)