

## Preliminary Report of Microtremor Measurement on Teotihuacan

Date of measurement: July 24<sup>th</sup>, 2001

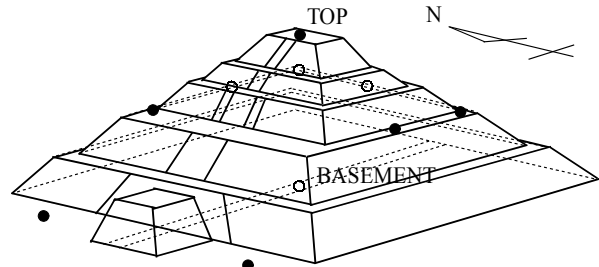
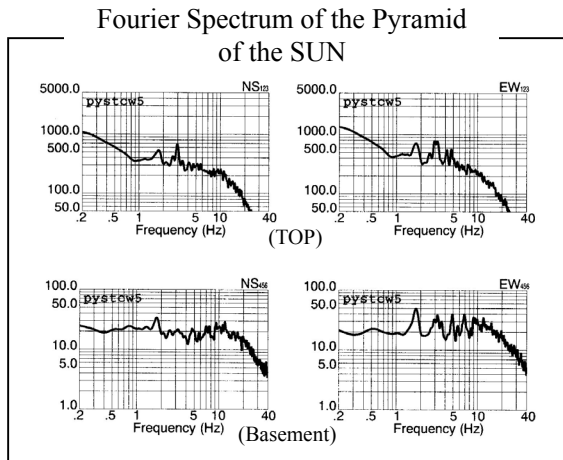


Fig.1 Measurement points on the Pyramid of the SUN

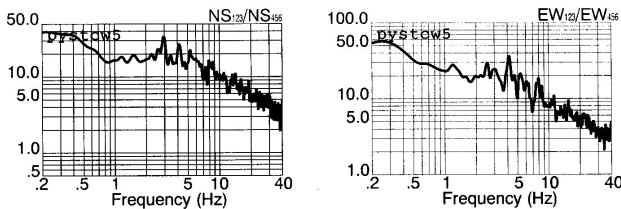


Fig.2 Estimated quasi-transfer spectrum of the Pyramid of the SUN

### Measured Predominant Frequencies:

- Pyramid of the SUN -

NS component	F = 2.95 (Hz)
EW component	F = 4.13 (Hz)

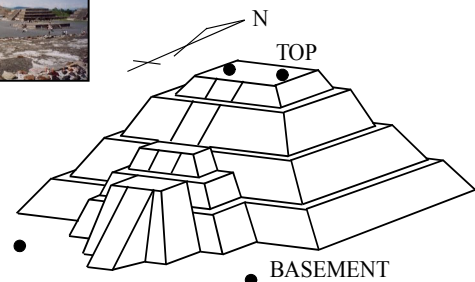
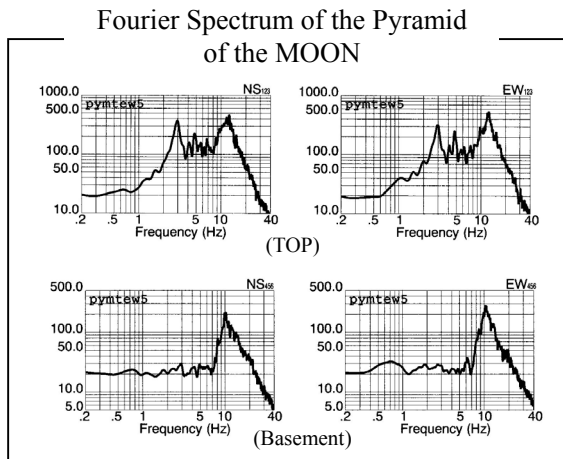


Fig.3 Measurement points on the Pyramid of the MOON

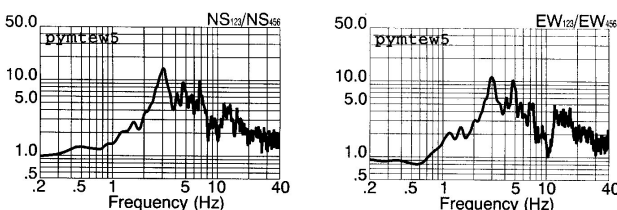


Fig.4 Estimated quasi-transfer spectrum of the Pyramid of the MOON

### Measured Predominant Frequencies:

- Pyramid of the MOON -

NS component	F = 3.05 (Hz)
EW component	F = 2.95 (Hz)