

Preliminary Report of Microtremor Measurement on Secondary School No.3

Date of measurement : October 31st, 1999

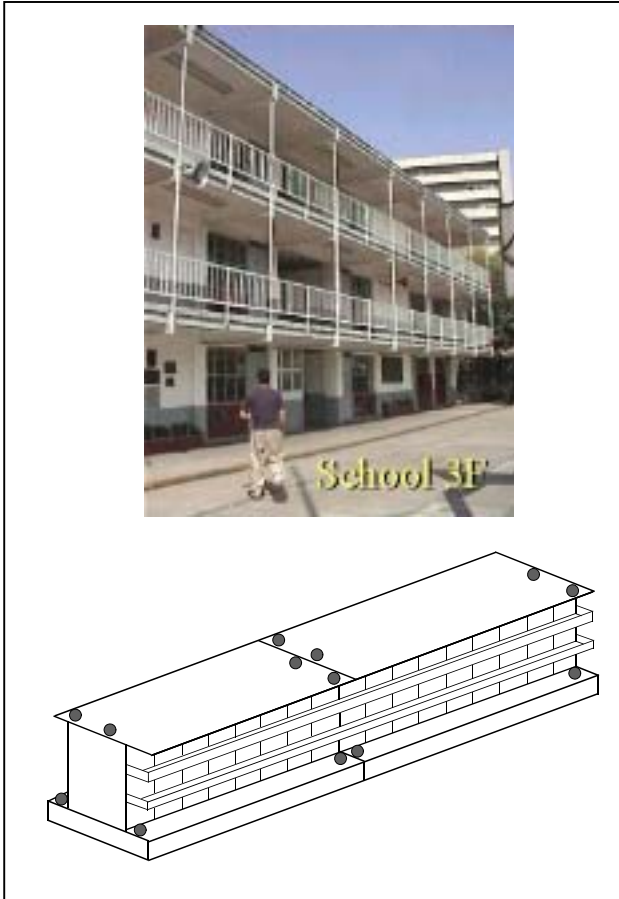


Fig.1 External appearance of measured building

- Fourier Spectrum of the building -

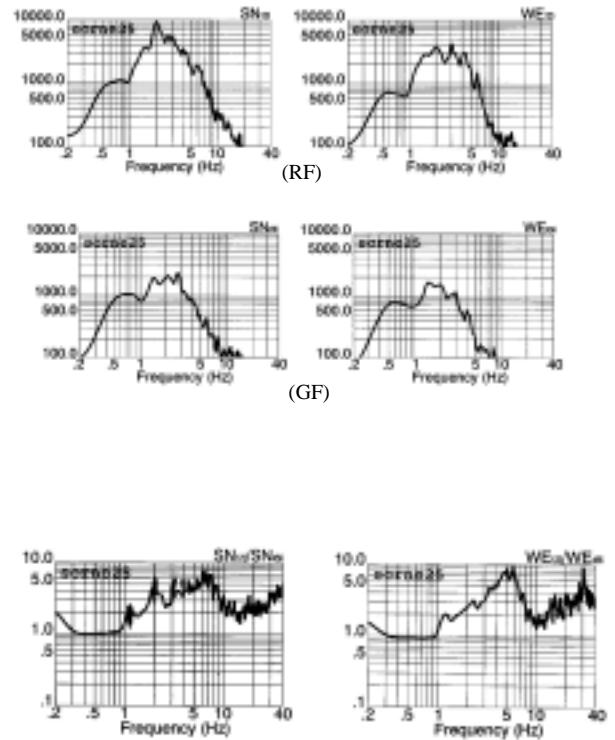


Fig.2 Estimated quasi-transfer spectrum of on the roof

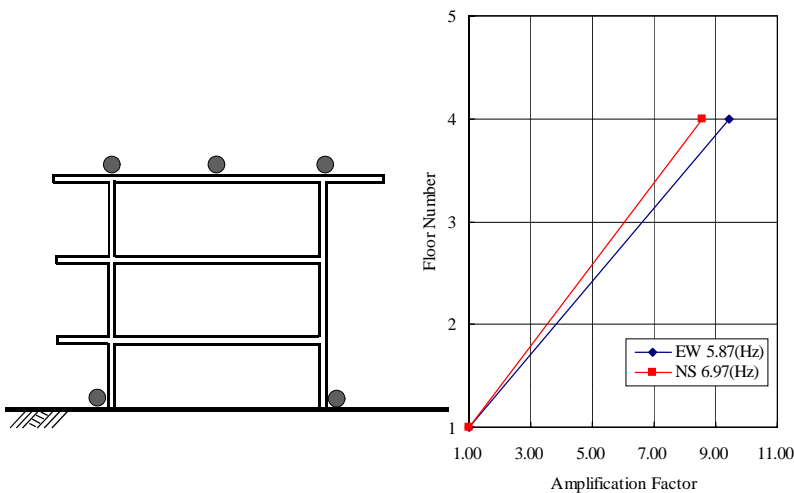


Fig.3 Measured points on each floor and vibration mode

Predominant Frequencies

Statistic value

$$F = (10 \sim 16)/N \\ = 2.50 \sim 4.00(\text{Hz})$$

Measured value

NS component $F=6.97(\text{Hz})$
EW component $F=5.87(\text{Hz})$

F: Frequency (Hz)

N: Number of stories (Floor)