

Preliminary Report of Microtremor Measurement on Plaza Inn

Date of measurement: July 15th, 2002

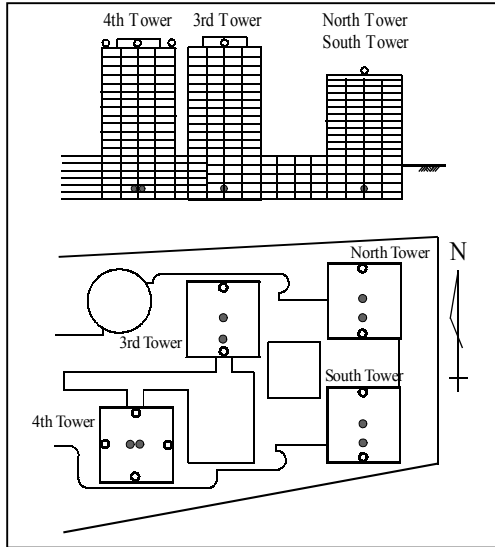


Fig.1 Measured points on each floor

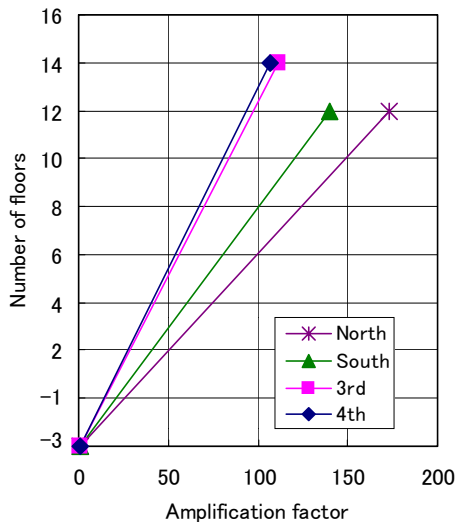


Fig.6 Vibration mode of measured buildings

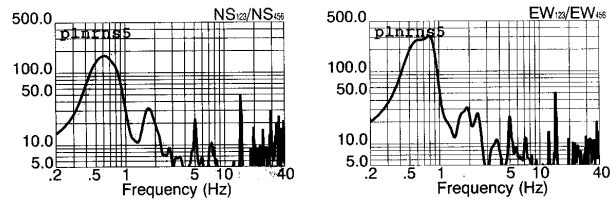


Fig.2 Estimated transfer spectrum of North Tower

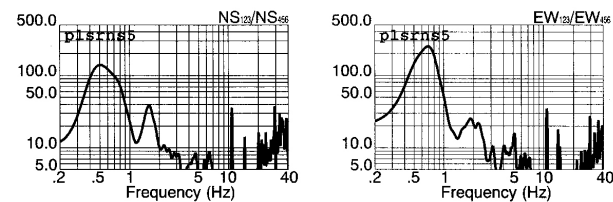


Fig.3 Estimated transfer spectrum of South Tower

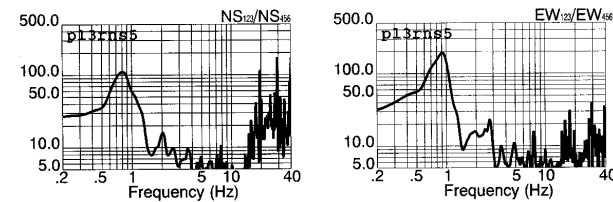


Fig.4 Estimated transfer spectrum of 3rd Tower

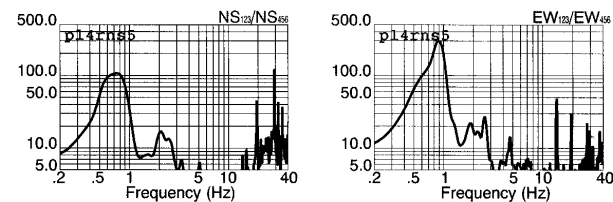


Fig.5 Estimated transfer spectrum of 4th Tower

Predominant Frequencies:

Statistic value

$$F = (10 \sim 16)/N$$

North, South Tower :

$$F=0.83 \sim 1.33 \text{ (Hz)}$$

3rd, 4th Tower :

$$F=0.71 \sim 1.14 \text{ (Hz)}$$

Measured value

(unit: Hz)

	North	South	3rd	4th
NS component	0.73	0.81	0.51	0.61
EW component	0.89	0.92	0.67	0.81
Torsion	2.60	2.73	3.13	3.33

F: Predominant frequency (Hz)

N: Number of stories (Floors)