

## Preliminary Report of Microtremor Measurement on Torre PEMEX

Date of measurement : July 30<sup>th</sup>, 2000

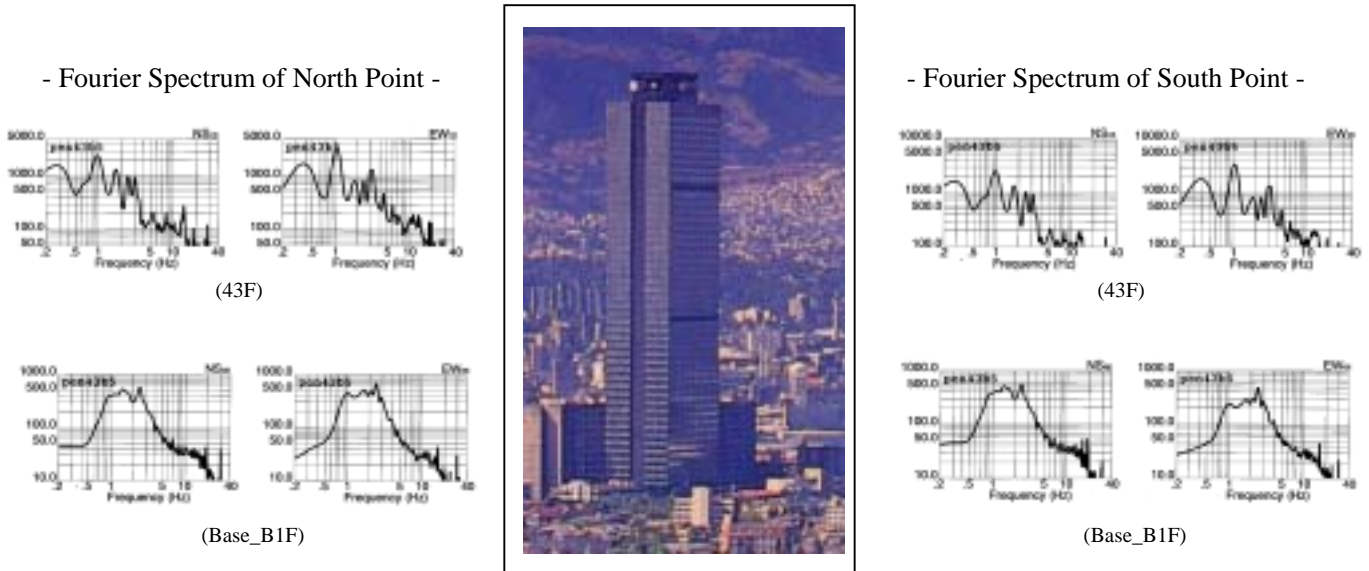


Fig.1 External appearance of measured building

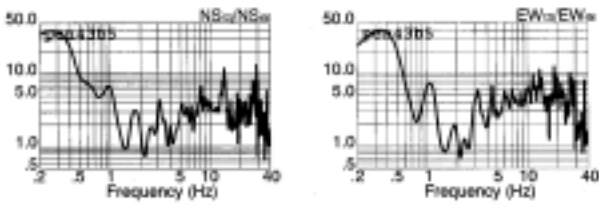


Fig.2 Estimated quasi-transfer spectrum of north point on the roof

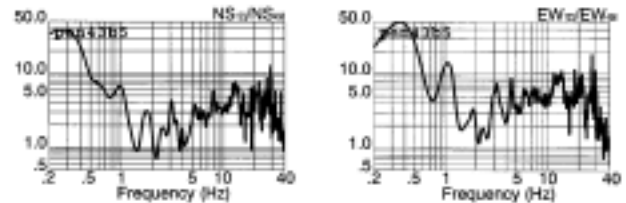


Fig.3 Estimated quasi-transfer spectrum of south point on the roof

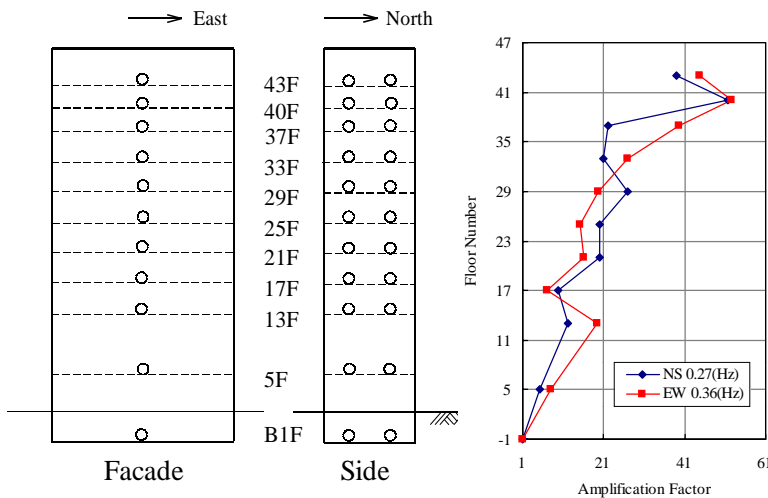


Fig.4 Measured points on each floor and vibration mode

**Predominant Frequencies**  
Statistic value

$$F = (10 \sim 16) / N$$

$$= 0.21 \sim 0.33(\text{Hz})$$

Measured value

NS component     $F=0.27(\text{Hz})$   
EW component     $F=0.36(\text{Hz})$

F: Frequency (Hz)  
N: Number of stories (Floor)