

Preliminary Report of Microtremor Measurement on Torre Latino Americana

Date of measurement : August 1st, 2000

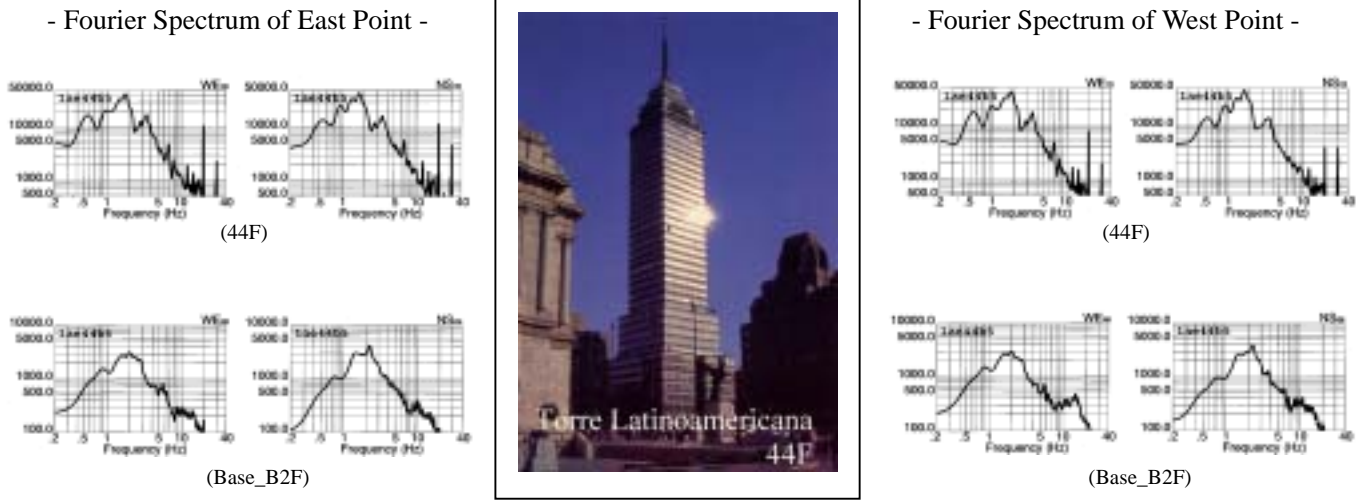


Fig.1 External appearance of measured building

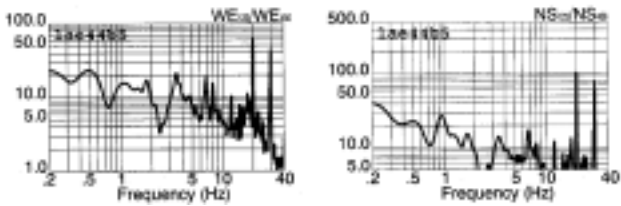


Fig.2 Estimated quasi-transfer spectrum of east point on the roof

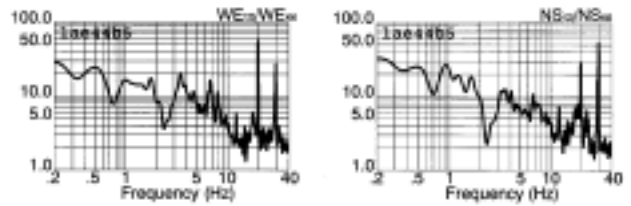


Fig.3 Estimated quasi-transfer spectrum of west point on the roof

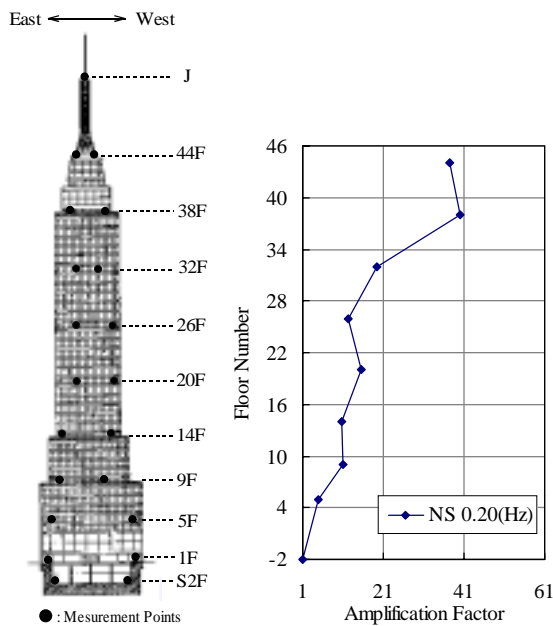


Fig.4 Measured points on each floor and vibration mode

Predominant Frequencies

Statistic value

$$F = (10 \sim 16)/N$$

$$= 0.23 \sim 0.36(\text{Hz})$$

Measured value

NS component $F=0.20(\text{Hz})$
EW component $F=0.19(\text{Hz})$

F: Frequency (Hz)

N: Number of stories (Floor)