

Preliminary Report of Microtremor Measurement on Jalapa building

Date of measurement : November 22nd, 2000



Fig.1 External appearance of measured building

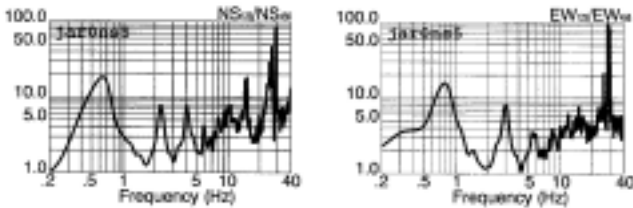


Fig.2 Estimated quasi-transfer spectrum of north point on the roof

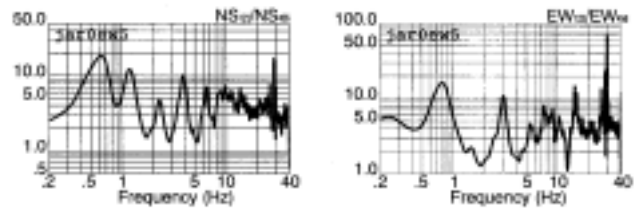


Fig.3 Estimated quasi-transfer spectrum of east point on the roof

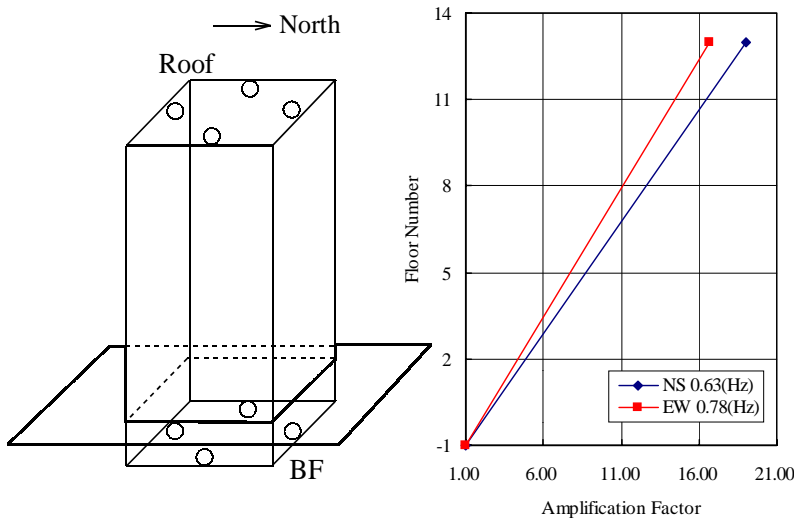


Fig.4 Measured points on each floor and vibration mode

Predominant Frequencies	
Statistic value	
$F = (10 \sim 16)/N$	
$= 0.77 \sim 1.23(\text{Hz})$	
Measured value	
NS component	F=0.63(Hz)
EW component	F=0.78(Hz)
F: Frequency (Hz)	
N: Number of stories (Floor)	