

## Preliminary Report of Microtremor Measurement on IMSS Building

Date of measurement : November 21<sup>st</sup>, 2000

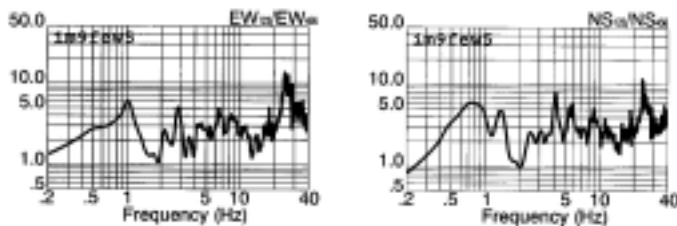
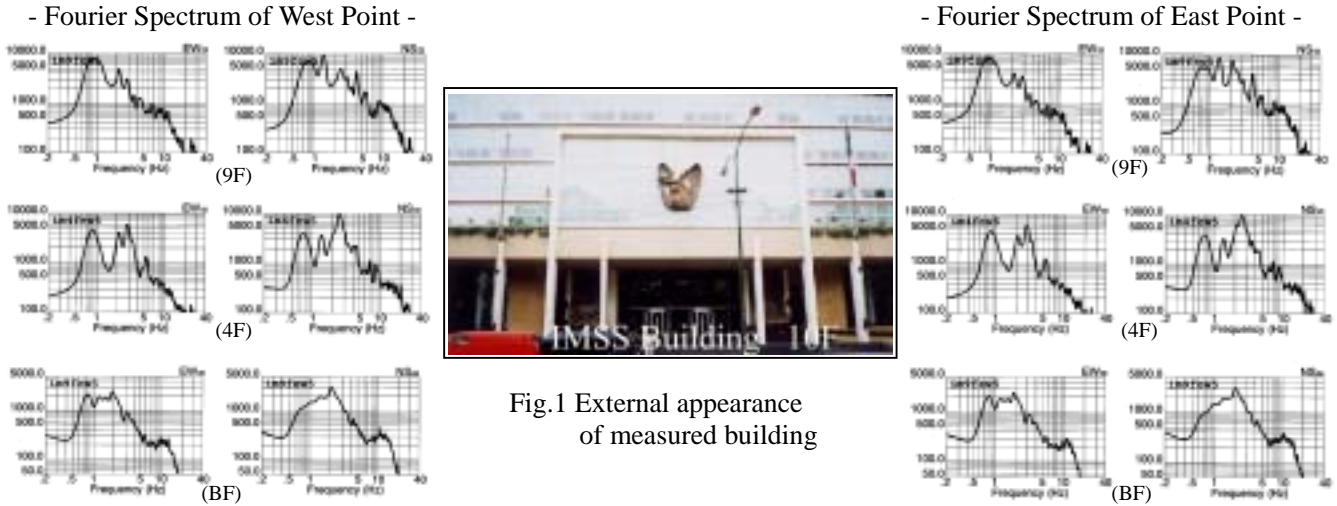


Fig.2 Estimated quasi-transfer spectrum of west point on 9<sup>th</sup> floor

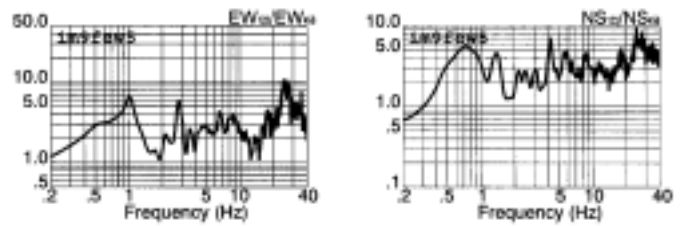


Fig.3 Estimated quasi-transfer spectrum of east point on 9<sup>th</sup> floor

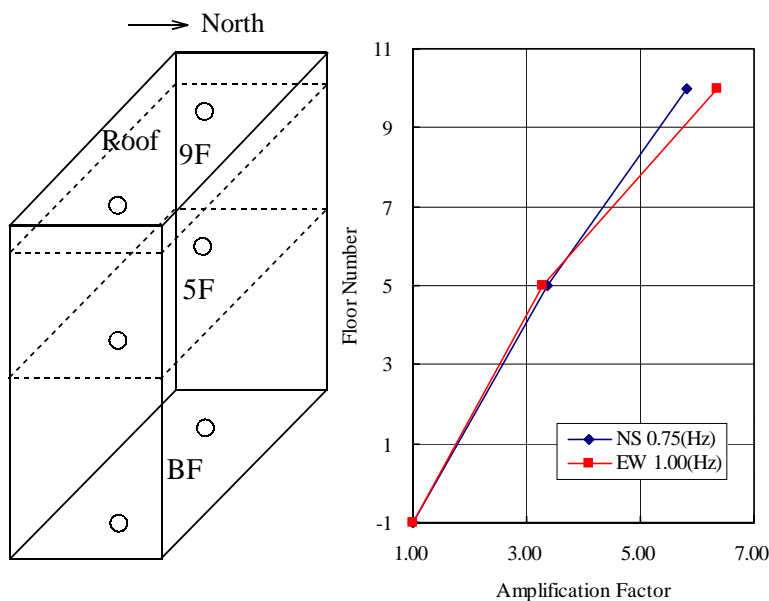


Fig.4 Measured points on each floor and vibration mode

**Predominant Frequencies**  
 Statistic value  
 $F = (10 \sim 16)/N$   
 $= 1.00 \sim 1.60(\text{Hz})$

Measured value  
 NS component  $F=0.75(\text{Hz})$   
 EW component  $F=1.00(\text{Hz})$

F: Frequency (Hz)  
 N: Number of stories (Floor)