

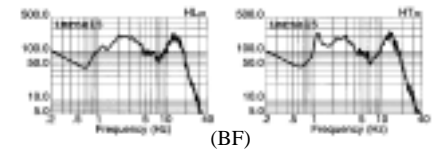
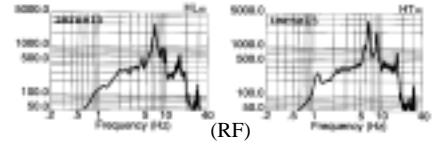
Preliminary Report of Microtremor Measurement on Iman

Date of measurement : October 31st, 1999

- Fourier Spectrum of North-East Point in Bldg. 1 -



Fig.1 External appearance of measured building



- Fourier Spectrum of North-East Point in Bldg. 2 -

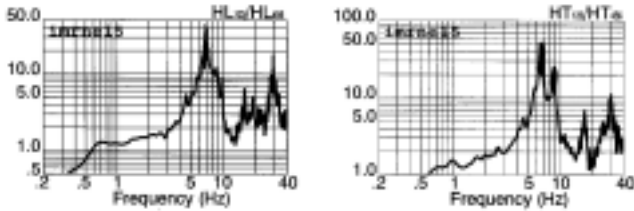
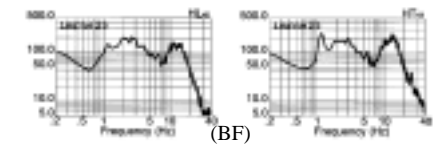
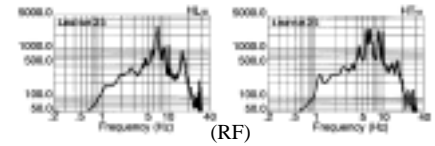


Fig.2 Estimated quasi-transfer spectrum of north-east point on the roof of bldg.1

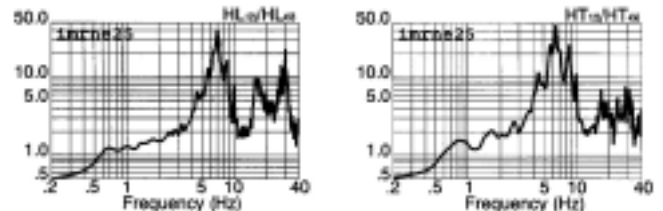


Fig.3 Estimated quasi-transfer spectrum of north-east point on the roof of bldg.2

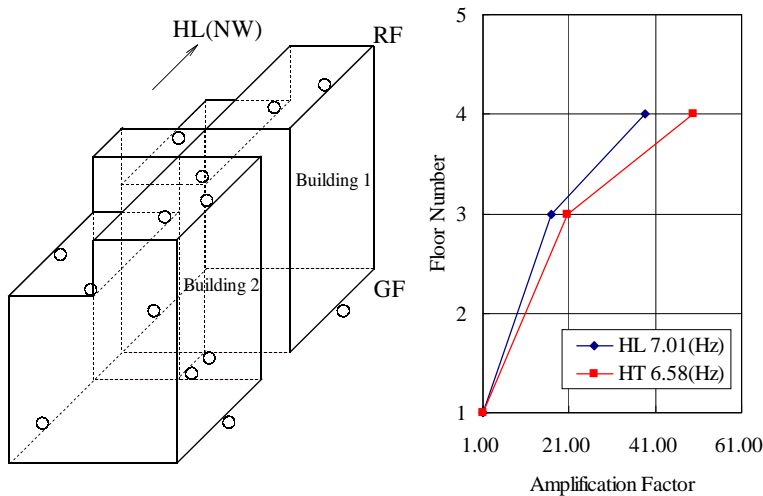


Fig.4 Measured points on each floor and vibration mode

Predominant Frequencies
 Statistic value
 $F = (10 \sim 16)/N$
 $= 2.5 \sim 4.00(\text{Hz})$

Measured value
 NS component $F=7.01(\text{Hz})$
 EW component $F=6.58(\text{Hz})$

F: Frequency (Hz)
 N: Number of stories (Floor)