

## Preliminary Report of Microtremor Measurement on Higera

Date of measurement : October 30<sup>th</sup>, 1999

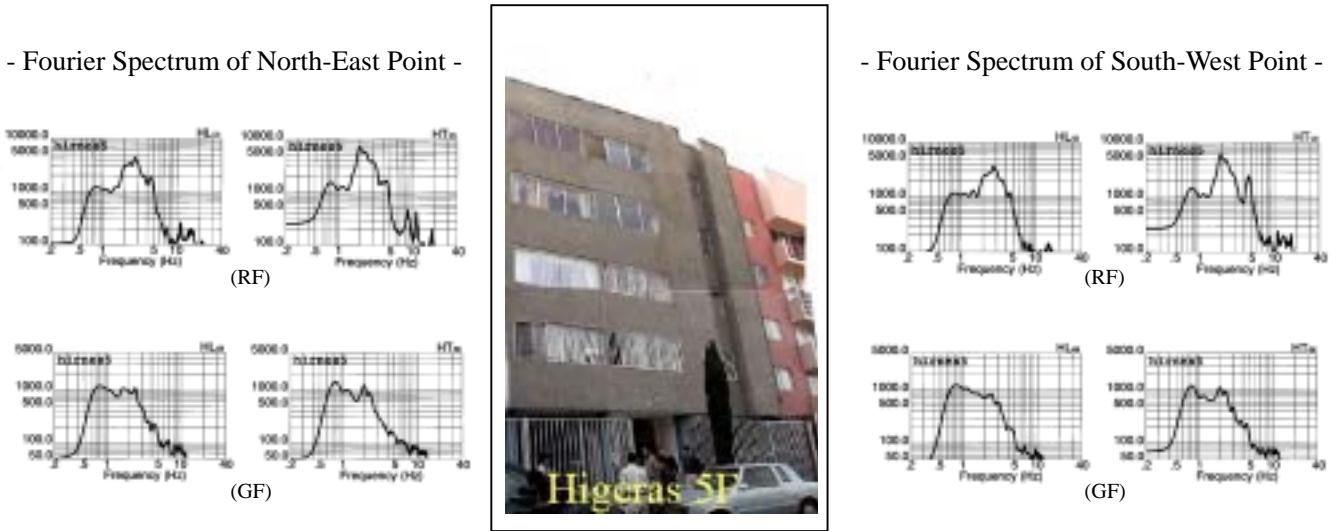


Fig.1 External appearance of measured building

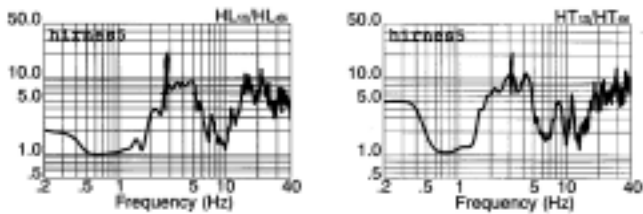


Fig.2 Estimated quasi-transfer spectrum of north-east point on the roof

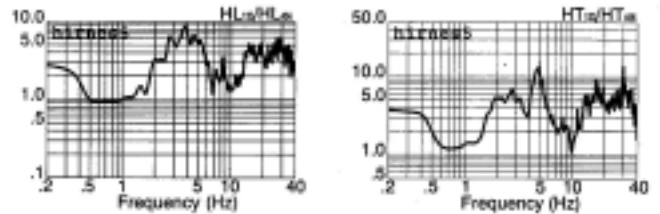


Fig.3 Estimated quasi-transfer spectrum of south-west point on the roof

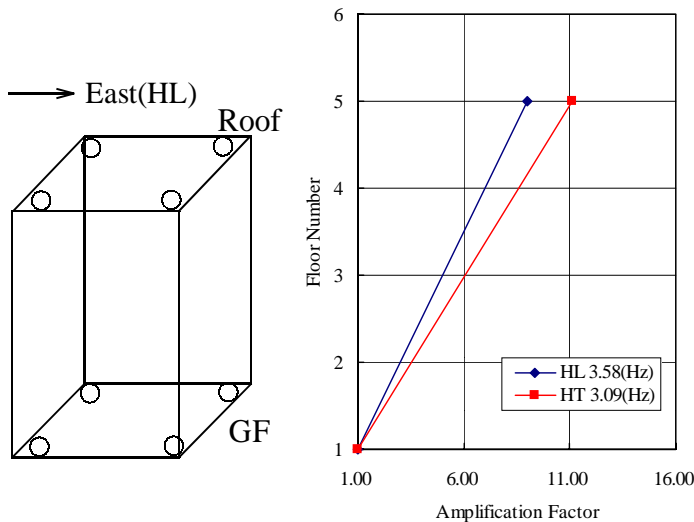


Fig.4 Measured points on each floor and vibration mode

**Predominant Frequencies**  
 Statistic value  

$$F = (10 \sim 16)/N$$

$$= 2.00 \sim 3.20(\text{Hz})$$
 Measured value  
 HL component     $F=3.58(\text{Hz})$   
 HT component     $F=3.09(\text{Hz})$

F: Frequency (Hz)  
 N: Number of stories (Floor)