

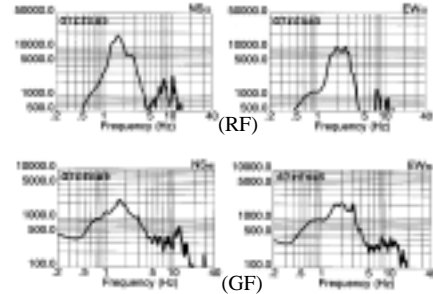
## Preliminary Report of Microtremor Measurement on Tlatelolco Sitio de Cuautla

Date of measurement : November 19<sup>th</sup>, 2000



Fig.1 External appearance of measured building

- Fourier Spectrum of North Point -



- Fourier Spectrum of West Point -

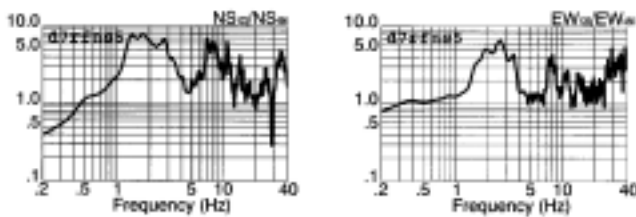
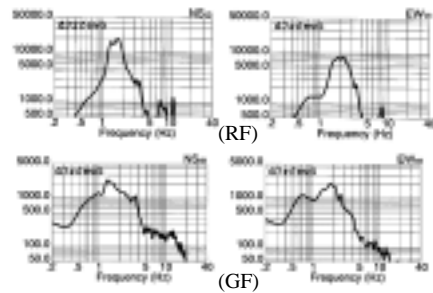


Fig.2 Estimated quasi-transfer spectrum of north point on the roof

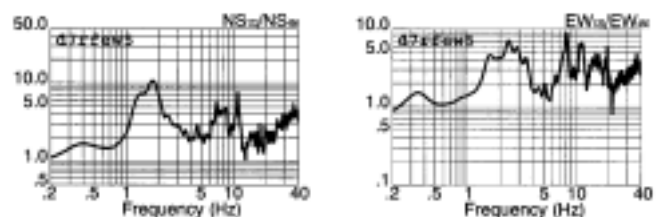


Fig.3 Estimated quasi-transfer spectrum of west point on the roof

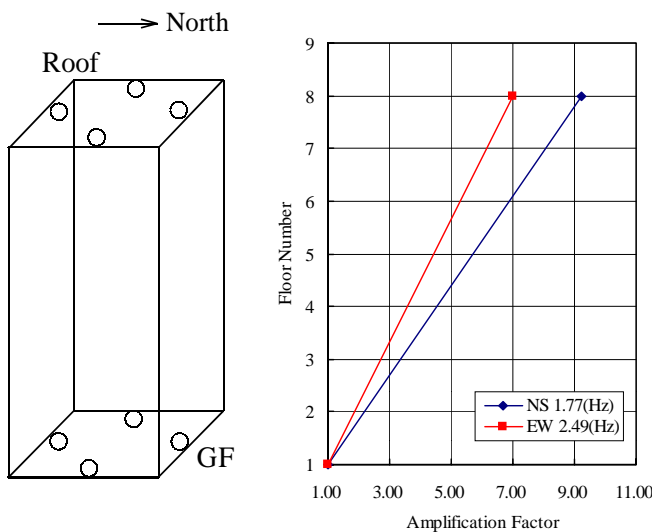


Fig.4 Measured points on each floor and vibration mode

<b>Predominant Frequencies</b>	
Statistic value	
$F = (10 \sim 16)/N$	
$= 1.25 \sim 2.00(\text{Hz})$	
Measured value	
NS component	F=1.77(Hz)
EW component	F=2.49(Hz)
F: Frequency (Hz)	
N: Number of stories (Floor)	