

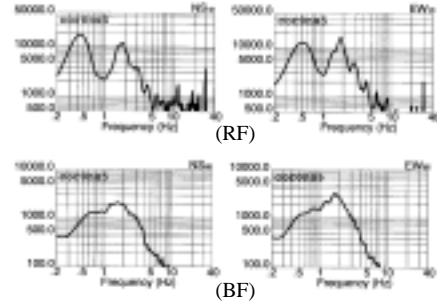
Preliminary Report of Microtremor Measurement on Plaza Cordoba Building

Date of measurement : November 22nd, 2000



Fig.1 External appearance of measured building

- Fourier Spectrum of North Point -



- Fourier Spectrum of East Point -

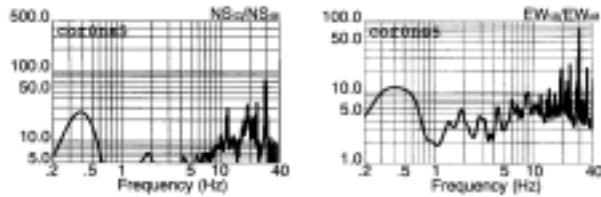
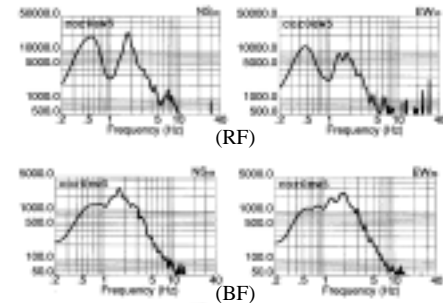


Fig.2 Estimated quasi-transfer spectrum of north point on the roof

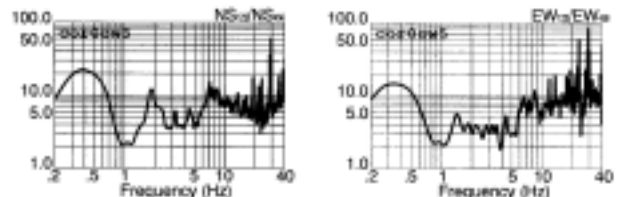


Fig.3 Estimated quasi-transfer spectrum of east point on the roof

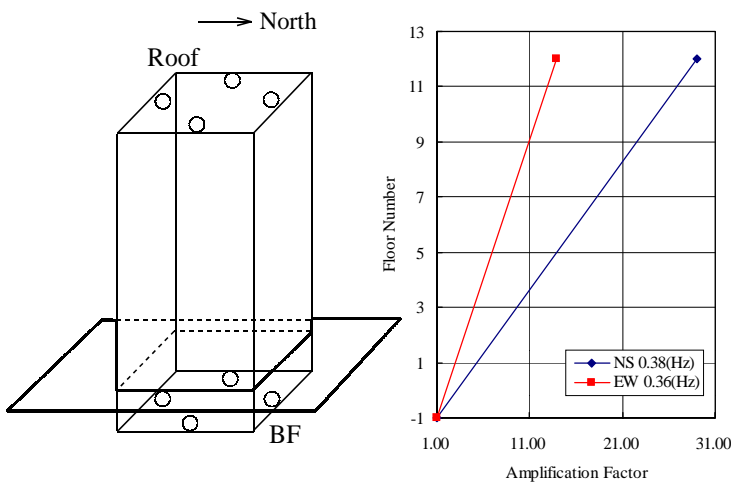


Fig.4 Measured points on each floor and vibration mode

Predominant Frequencies

Statistic value

$$F = (10 \sim 16)/N$$

$$= 0.83 \sim 1.33(\text{Hz})$$

Measured value

NS component F=0.38(Hz)
EW component F=0.36(Hz)

F: Frequency (Hz)
N: Number of stories (Floor)