

# Preliminary Report of Microtremor Measurement on Condominio Reforma

Date of measurement : November 20<sup>th</sup>, 2000

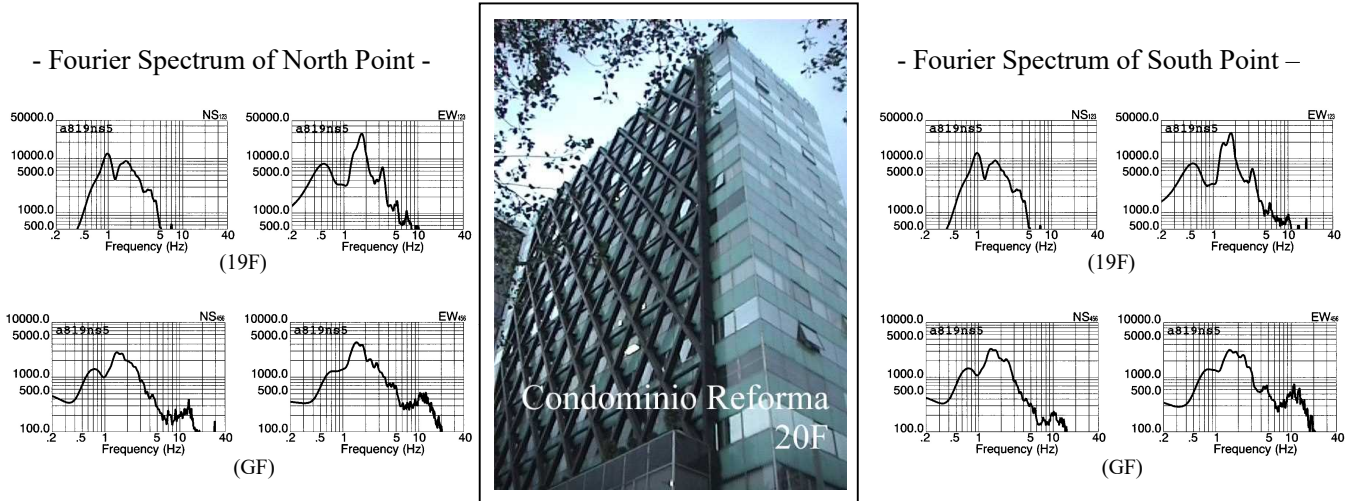


Fig.1 External appearance of measured building

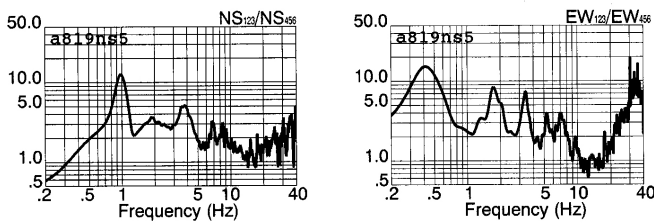


Fig.2 Estimated quasi-transfer spectrum of north point on the roof

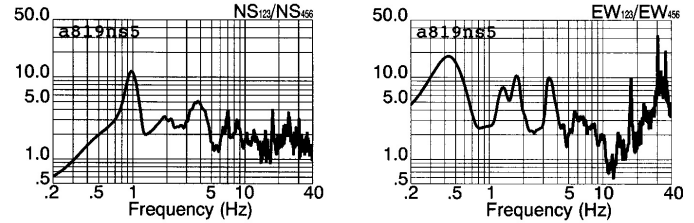


Fig.3 Estimated quasi-transfer spectrum of south point on the roof

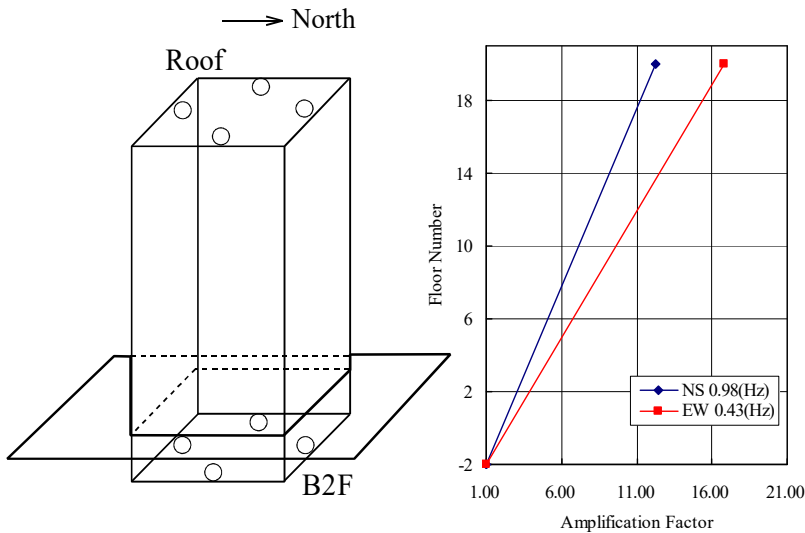


Fig.4 Measured points on each floor and vibration mode

**Predominant Frequencies**  
 Statistic value  
 $F = (10 \sim 16)/N$   
 $= 0.50 \sim 0.80(\text{Hz})$

Measured value  
 NS component  $F=0.98(\text{Hz})$   
 EW component  $F=0.43(\text{Hz})$

F: Frequency (Hz)  
 N: Number of stories (Floor)