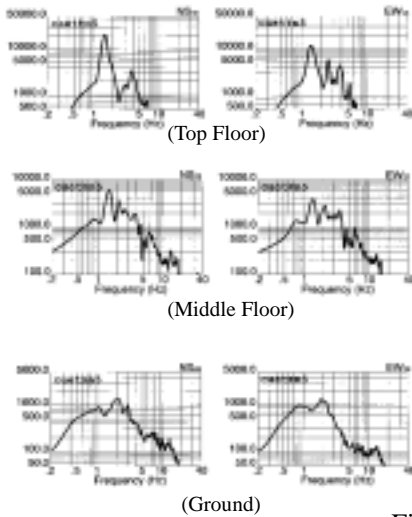


Preliminary Report of Microtremor Measurement on Metropolitan Cathedral

Date of measurement : November 23rd, 2000

- Fourier Spectrum of North Point -
- on The East Tower -



- Fourier Spectrum of East Point -
- on The East Tower -

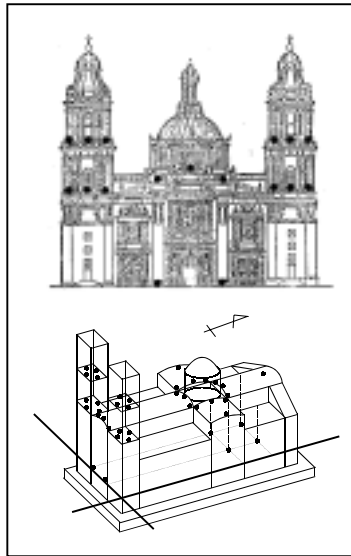
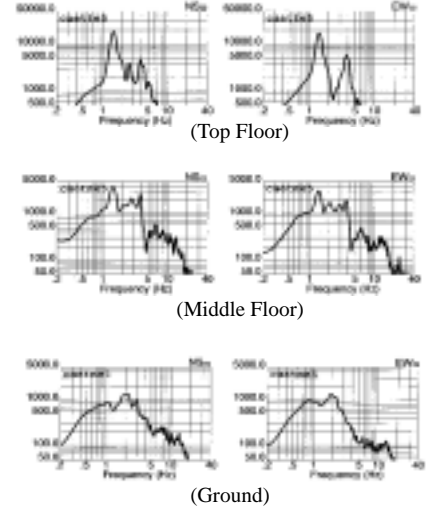


Fig.1 External appearance of measured structure

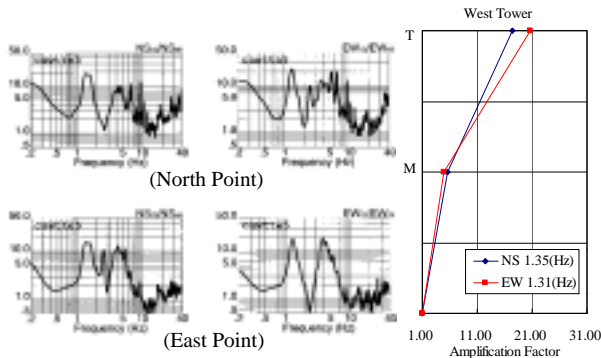


Fig.2 Estimated quasi-transfer spectrum of the top floor on west tower

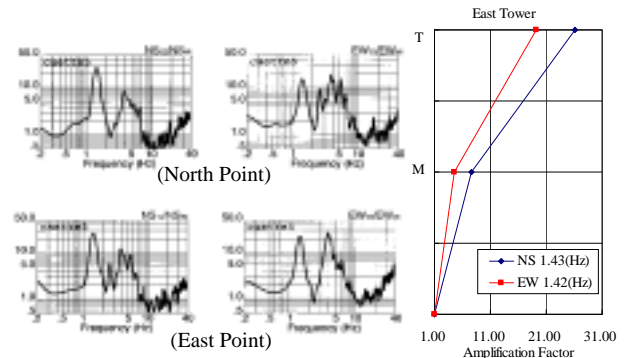


Fig.3 Estimated quasi-transfer spectrum of the top floor on east tower

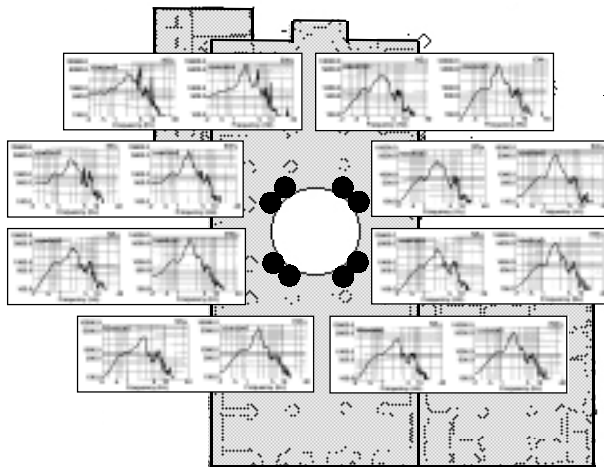


Fig.4 Fourier spectrum of the dome

Predominant Frequencies	
East Tower	
NS component	1.43(Hz)
EW component	1.42(Hz)
West Tower	
NS component	1.35(Hz)
EW component	1.31(Hz)
Dome	
NS component	2.31(Hz)
EW component	2.30(Hz)