

Preliminary Report of Microtremor Measurement on Bellas Artes

Date of measurement : July 16th, 2002

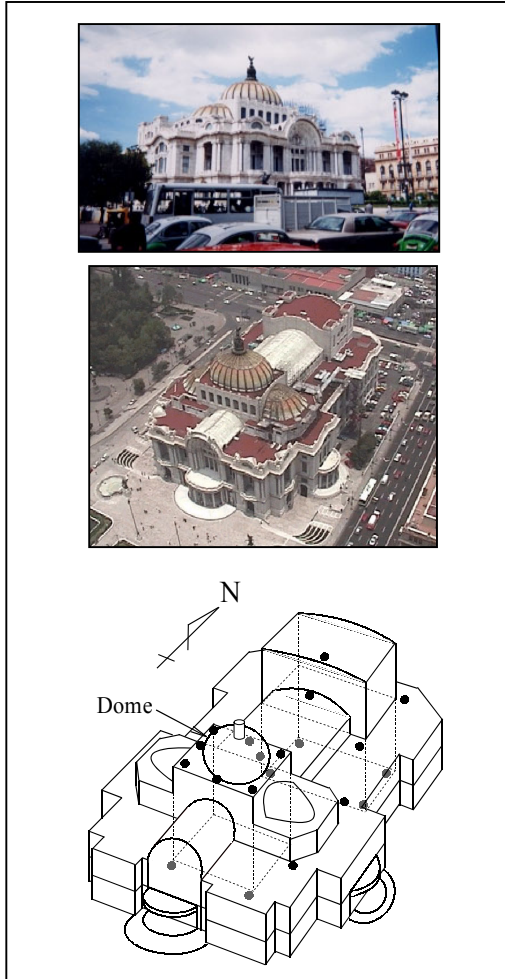


Fig.1 External appearance of measured structure

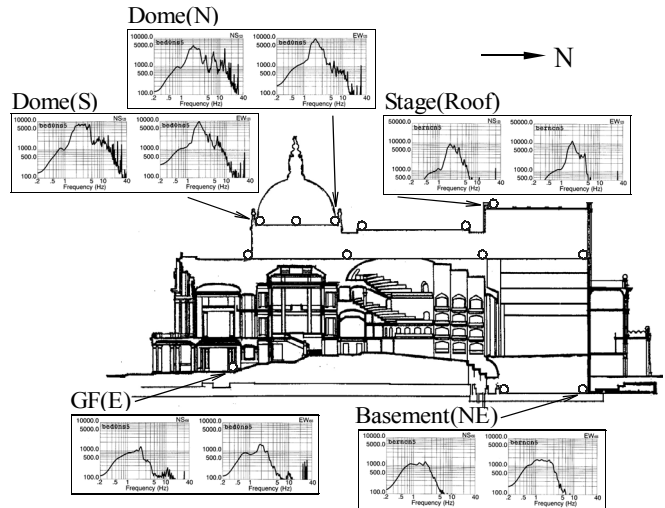


Fig.2 Fourier spectrum of the each point

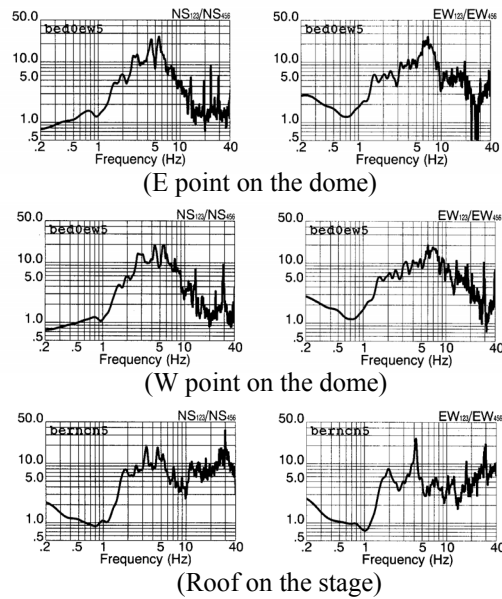


Fig.3 Estimated transfer spectrum of the each point

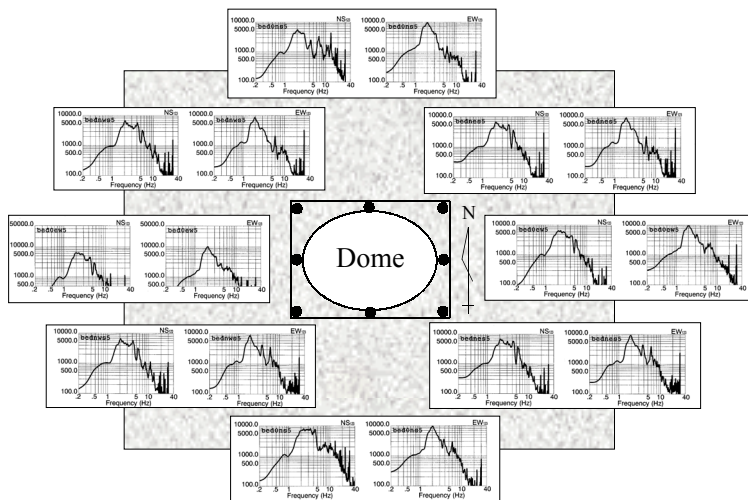


Fig.4 Fourier spectrum of the dome

Predominant Frequencies:

- Dome
 - NS component F=5.52(Hz)
 - EW component F=6.03(Hz)
- Stage
 - NS component F=3.34(Hz)
 - EW component F=4.20(Hz)