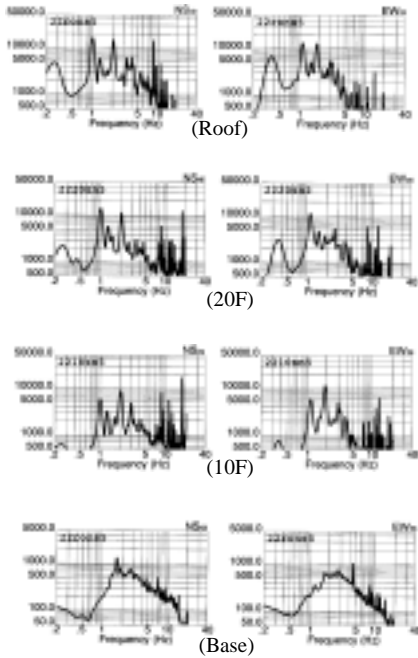


Preliminary Report of Microtremor Measurement on Hotel Presidente Chapultepec

Date of measurement : November 22nd, 2000

- Fourier Spectrum of North Point -



- Fourier Spectrum of East Point -

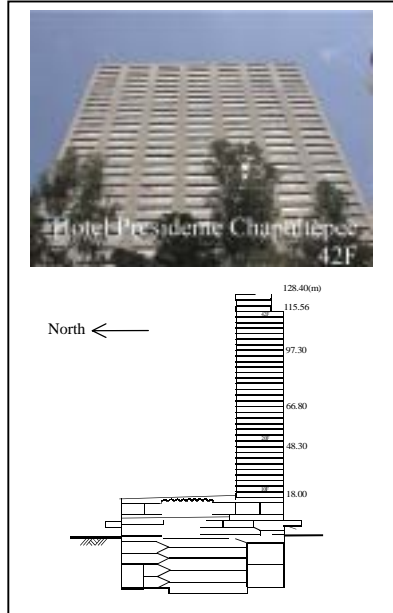
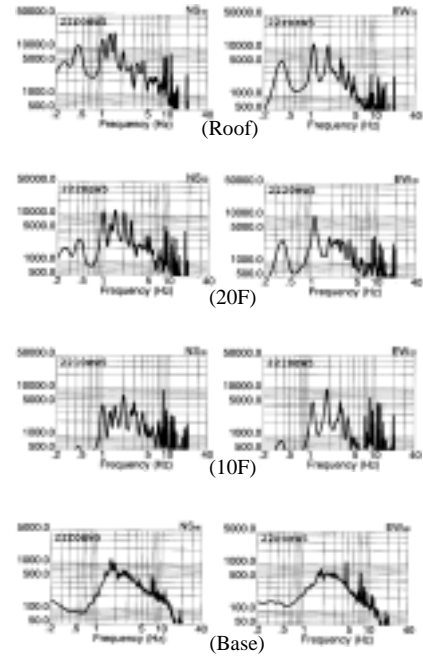


Fig.1 External appearance of measured building

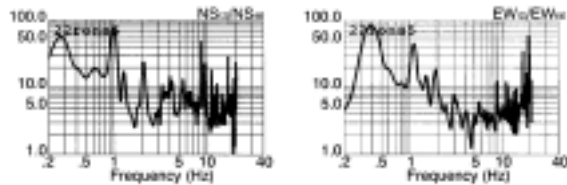


Fig.2 Estimated quasi-transfer spectrum of north point on the roof

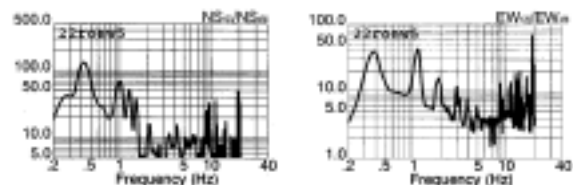


Fig.3 Estimated quasi-transfer spectrum of east point on the roof

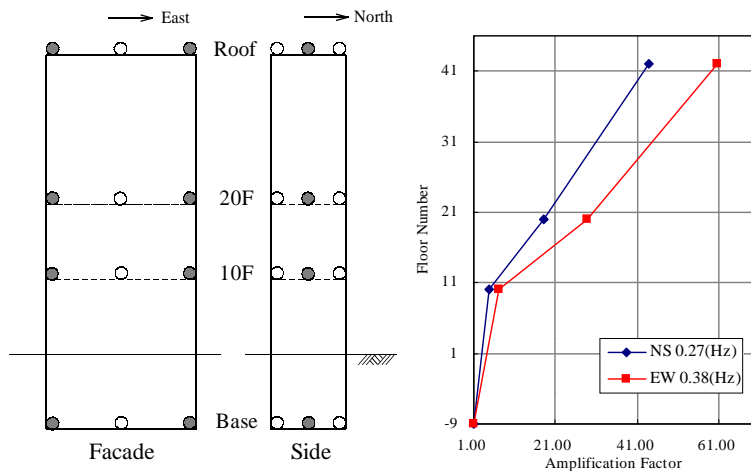


Fig.4 Measured points on each floor and vibration mode

Predominant Frequencies

Statistic value

$$F = (10 \sim 16)/N$$

$$= 0.23 \sim 0.38(\text{Hz})$$

Measured value

- NS component F=0.27(Hz)
- EW component F=0.38(Hz)
- Torsion F=0.43(Hz)

F: Frequency (Hz)

N: Number of stories (Floor)